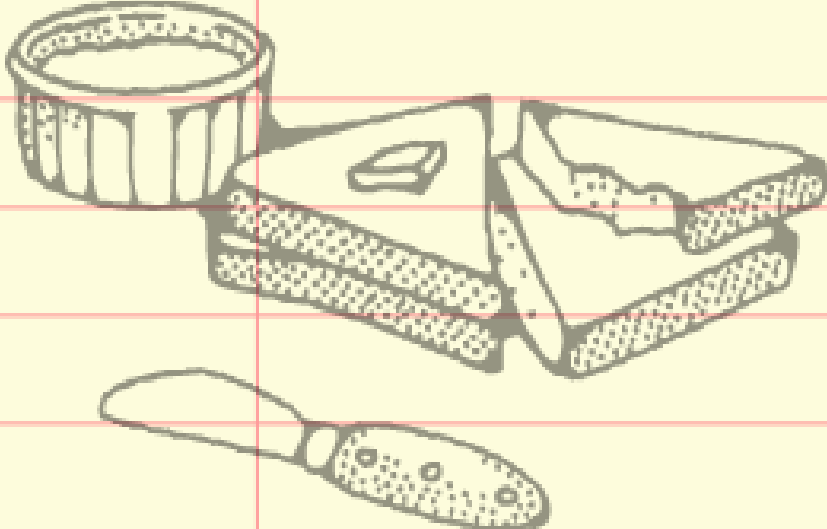
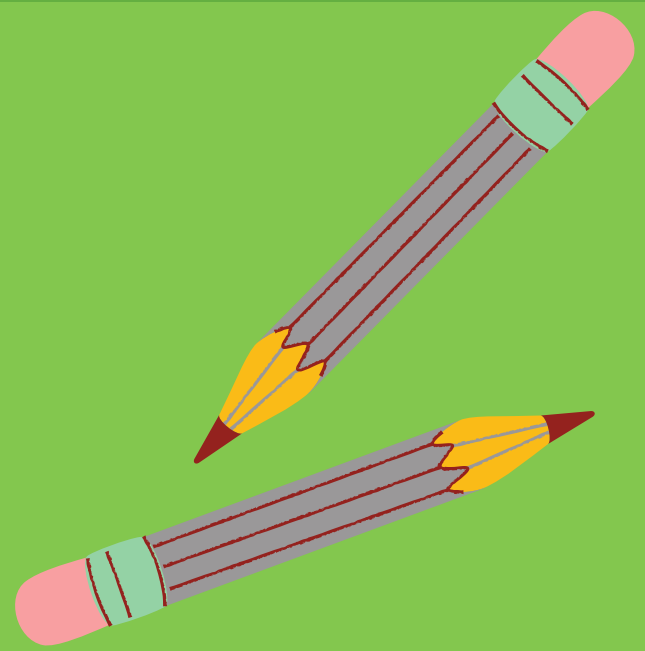


# We are what we eat



# W E A R E W H A T W E E A T

What do you usually have for breakfast?	Food classification
1. María usually has.....	
2.	
3.	
4.	
5.	
6.	
7.	
8.	
9.	
10.	



W E A R E W H A T W E E A T

FRUIT



BAKERY



SWEETS



CEREAL BARS



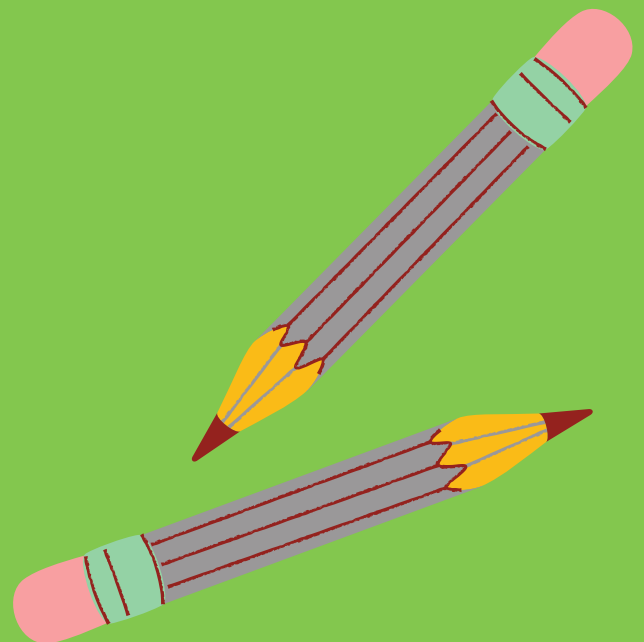
CHOCOLATE



SANDWICH



CLASSIFY THE FOOD



W E A R E W H A T W E E A T

HEALTHY OR UNHEALTHY



VEGAN OR VEGETARIAN



NUT FREE



SUGAR FREE



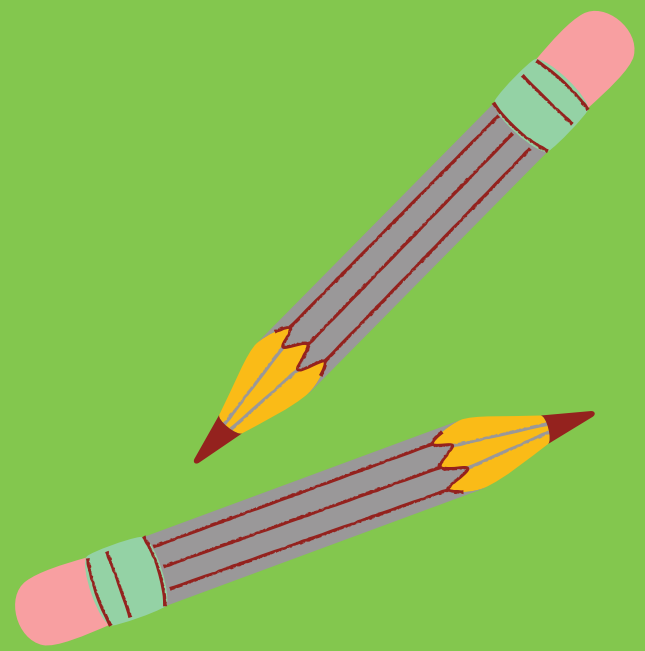
LACTOSE FREE



GLUTEN FREE



# CLASSIFY THE FOOD



**R E A**

**ANDALUCÍA**

RECURSOS **EDUCATIVOS** ABIERTOS

  
Andalucía  
se mueve con Europa



**UNIÓN EUROPEA**  
Fondos Europeo de Desarrollo Regional



**Junta  
de Andalucía**

Consejería de Educación  
y Deporte