

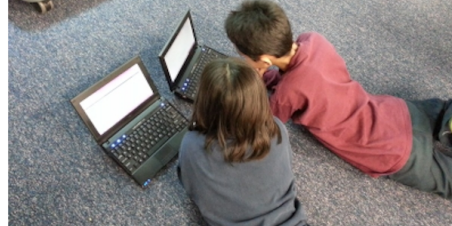
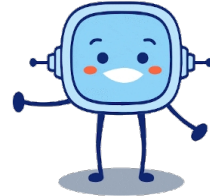
Survey





How do you use electronic devices for leisure, communication or school work?

Please, answer the questions. It is important to know what kind of user you are?



Name:

1. How many devices do you have or use?

2. How many hours do you use your devices a day?

3. Do you use your devices for school work?

4. Do you use your devices for leisure?

5. Do you use your devices for communication?

6. Do you use devices to be informed?

Survey: How do you use electronic devices for leisure, communication or school purposes?



UNIÓN EUROPEA
Fondos Europeo de Desarrollo Regional



**Junta
de Andalucía**

Consejería de Educación
y Deporte